

SPRING FLYER 2019

Be Smart. Be Safe. Be Sure.



LED Headlamp



- SMD Technology
- Up to 100,000 hours lifetime
- Tilts 9 positions
- Equipped with sensor, allowing user to turn light off and on with a wave of the hand

849821 JLHL-220 | List \$47.80

SALE

\$36.95

29 PC JET-KUT® B & G Jobber Length Drill Bit Set - Premium Quality



- Popular 29 piece format with a strong metal box to protect and organize your bits
- Premium 135° Split Point - Black and Gold Finish
- Professional grade M2 high speed steel bits at competitive prices
- Bronze oxide gold lands to reduce friction for cooler cutting and longer bit life
- Nitro carburized black flutes for improved surface hardness ensure bit stays sharp longer
- 135° split point eliminates "walking"

570146 BG29 | List \$138.50

SALE

\$84.95

Digital Torque Wrenches



- Digital readout signals torque audibly and visually
- 12 multi coloured lights with beeper signal torque even when display cannot be read

PROD. NO.	MOD. NO.	Drive	Torque Range	Length	List	Sale
718941	JDTW-14250	1/4"	13.3 – 265.5 in-lb (1.5 – 30 Nm)	15-11/32"	\$603.55	\$299.95
718943	JDTW-38100	3/8"	5 – 99.5 ft-lb (6.8 – 135 Nm)	16-5/16"	\$645.90	\$319.95
718946	JDTW-12250	1/2"	12.5 – 250.5 ft-lb (17 – 340 Nm)	25-1/2"	\$707.00	\$349.95

Sale Pricing in Effect April 1 – June 30, 2019

Distributed by



TOOLS & EQUIPMENT

42 PC 1/4" DR SAE/Metric Socket Wrench Set - 6 Point



- 3/16 – 1/2"
- 4 – 12 mm
- Standard and deep length
- CrV steel

600125 SW1442C-6 | List \$160.30

SALE \$92.95

21 PC 3/8" DR SAE Socket Wrench Set - 6 Point



- 3/8 – 3/4" standard length
- 3/8 – 13/16" deep length
- CrV steel

600229 SW3821-6 | List \$181.00

SALE \$104.95

45 PC 3/8" DR SAE/Metric Socket Wrench Set - 6 Point



- 3/8 – 3/4", 8 – 19 mm standard length
- 3/8 – 13/16", 8 – 19 mm deep length
- CrV steel

600241 SW3845C-6 | List \$310.35

SALE \$179.95

20 PC 1/2" DR SAE Socket Wrench Set - 6 Point



- 7/16 – 1-1/4"
- Standard length
- CrV steel

600323 SW1220-6 | List \$293.10

SALE \$169.95

55 PC 1/2" DR SAE/Metric Socket Wrench Set - 6 Point



- 3/8 – 1-1/4", 10 – 32 mm standard length
- 7/16 – 7/8", 10 – 21 mm deep length
- CrV steel

600341 SW1255C-6 | List \$500.05

SALE \$289.95

21 PC 3/4" DR SAE Socket Wrench Set - 12 Point



- 3/4 – 2"
- CrV steel

600402 SW7521 | List \$579.60

SALE \$319.95

Hex Bit Socket Sets



- Includes socket rail
- S2 steel

PROD. NO.	MOD. NO.	Sizes	List	Sale
601804	LHSW3807	1/8, 5/32, 3/16, 7/32, 1/4, 5/16, 3/8"	\$86.15	\$49.95
601805	LHSW3807M	4, 5, 6, 7, 8, 9, 10 mm	\$86.15	\$49.95

10 PC 1/4" & 3/8" DR Tamperproof TORX® Bit Socket Set



- 1/4" DR T10 – T30
- 3/8" DR T40 – T55
- Includes socket rail

601801 SS1438-10TB | List \$63.75

SALE \$36.95

21 PC 1" DR SAE Socket Wrench Set - 12 Point



- 1-7/16 – 3-1/8"
- CrV steel

600503 SW1021 | List \$1,900.35

SALE \$1,049.00

7 PC 3/4" DR Telescoping Tool Set

SUPER SPECIAL



- Variety of handles and drive tools for all jobs

690105 SDK3407 | List \$612.15

SALE \$329.95

17 PC 3/4" DR SAE Socket Set - 12 Point

SUPER SPECIAL



- 7/8 – 2" standard length
- CrV steel

601405 SS3417 | List \$451.00

SALE \$236.95

17 PC 3/4" DR Metric Socket Set - 12 Point

SUPER SPECIAL



- 19 – 50 mm
- CrV steel

601406 SS3417M | List \$416.60

SALE \$218.95

12 PC 3/8" DR Deep SAE Impact Socket Set - 6 Point



- 5/16 – 1"
- CrMo steel

610208 PS1238D | List \$172.40

SALE \$99.95

19 PC 1/2" DR Deep SAE Impact Socket Set - 6 Point



- 3/8 – 1-1/2"
- CrMo steel

610329 PS1912D | List \$327.60

SALE \$189.95

10 PC 1/2" DR Deep SAE Impact Socket Set - 6 Point



- 7/16 – 1"
- CrMo steel

610303 PS1012D | List \$155.15

SALE \$89.95

13 PC 1/2" DR Deep SAE Impact Socket Set - 6 Point



- 7/16 – 1-1/4"
- CrMo steel

610323 PS1312D | List \$194.80

SALE \$112.95

8 PC 3/4" DR Deep SAE Impact Socket Set - 6 Point



- 1 – 1-1/2"
- CrMo steel

610402 PS834D | List \$361.90

SALE \$209.95

12 PC 1/2" DR Deep Metric Impact Socket Set - 6 Point



- 10 – 24 mm
- CrMo steel

610310 PS1212DM | List \$194.80

SALE \$112.95

19 PC 1/2" DR SAE Impact Socket Set - 6 Point



- 3/8 – 1-1/2"
- CrMo steel

610328 PS1912 | List \$224.10

SALE \$129.95

16 PC 3/4" DR SAE Impact Socket Set - 6 Point



- 3/4 – 2"
- CrMo steel

610403 PS1634 | List \$542.90

SALE \$314.95

1/2" Drive Hex Bit Socket Sets



PROD. NO.	MOD. NO.	Sizes	List	Sale
610331	PHB-1208	1/4, 5/16, 3/8, 7/16, 1/2, 9/16, 5/8, 3/4"	\$149.95	\$86.95
610333	PHB1208M	6, 7, 8, 10, 12, 14, 17, 19 mm	\$149.95	\$86.95

9 PC 1" DR Deep SAE Impact Socket Set - 6 Point



- 1 – 2"
- CrMo steel

610503 PS901D | List \$688.15

SALE \$399.00

7 PC 1/2" DR SAE Universal Impact Socket Set - 6 Point

SUPER SPECIAL



- 1/2 – 7/8"
- CrMo steel

610382 PSU712 | List \$250.00

SALE \$129.95

9 PC 1/2" DR Metric Universal Impact Socket Set - 6 Point

SUPER SPECIAL



- 13 – 22 mm
- CrMo steel

610388 PSU912M | List \$293.10

SALE \$139.95

10 PC SAE Jumbo Raised Panel Combination Wrench Set



- 1-5/16 – 2"
- S45C alloy steel

700128 JCW-10-2 | List \$862.25

SALE \$499.95

16 PC SAE Raised Panel Combination Wrench Set



- 1/4 – 1-1/4"
- CrV steel
- Terylene pouch

700121 CWS-16S | List \$224.10

SALE \$129.95

22 PC Metric Raised Panel Combination Wrench Set



- 7 – 32 mm
- CrV steel
- Terylene pouch

700177 CWS-22M | List \$267.25

SALE \$154.95

14 PC Long SAE Fully Polished Combination Wrench Set



- 3/8 – 1-1/4"
- Includes terylene pouch
- CrV steel

700134 LCWS-14S | List \$361.05

SALE \$209.95

16 PC Long Metric Fully Polished Combination Wrench Set



- 7 – 24 mm
- Includes terylene pouch
- CrV steel

700185 LCWS-16M | List \$246.55

SALE \$142.95

13 PC Long SAE Reversible Ratcheting Combination Wrench Set

SUPER SPECIAL



- 1/4 – 1"
- CrV steel
- Plastic rack

700322 RCWS-13SR | List \$517.30

SALE \$239.95

Torque Wrenches



- ft-lb and Nm scales

PROD. NO.	MOD. NO.	Drive	Torque Range	List	Sale
718902	JTW-1425	1/4"	40 – 250 in-lb (6 – 30 Nm)	\$206.85	\$119.95
718908	JTW-3880	3/8"	15 – 80 ft-lb (19 – 110 Nm)	\$224.10	\$129.95
718911	JTW-12150	1/2"	30 – 150 ft-lb (40 – 210 Nm)	\$258.60	\$149.95
718912	JTW-12250	1/2"	50 – 250 ft-lb (70 – 350 Nm)	\$327.60	\$189.95

13 PC Long SAE Ratcheting Combination Wrench Set

SUPER SPECIAL



- 1/4 – 1"
- CrV steel
- Plastic rack

700312 RCWS-13S | List \$421.40

SALE \$199.95

Industrial Torque Wrenches



- Industrial tough!
- Torques left or right

PROD. NO.	MOD. NO.	Drive	Torque Range	List	Sale
718971	JITW-14250	1/4"	50 – 250 in-lb (6.8 – 27.1 Nm)	\$253.50	\$146.95
718973	JITW-38100	3/8"	20 – 100 ft-lb (33.9 – 128.8 Nm)	\$293.10	\$169.95
718976	JITW-12250	1/2"	50 – 250 ft-lb (75 – 332 Nm)	\$338.00	\$196.00
718977	JITW-34600	3/4"	150 – 600 ft-lb (237 – 779 Nm)	\$1,205.50	\$699.00
718980	JITW-101000	1"	200 – 1,000 ft-lb (305 – 1,322 Nm)	\$2,586.00	\$1,499.00

11 PC SAE Flex Head Ratchet Combination Wrench Set

SUPER SPECIAL

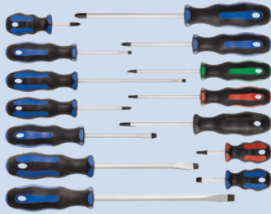


- Flex head design allows up to 180° flex for increased access to confined areas
- Light tension holds position while allowing easy adjustment of angle

700331 RCWS-11FS | List \$465.55

SALE \$219.95

14 PC Ergonomic Screwdriver Set

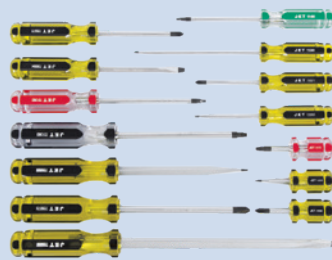


- Unique handle design conforms to the hand for exceptional comfort and grip
- Patented SVCM tool steel is up to 30% stronger than CrV screwdrivers

720524 JSTD-14S | List \$165.55

SALE \$96.00

14 PC Jumbo Handle Screwdriver Set



- CrV shaft
- Blow mould tray

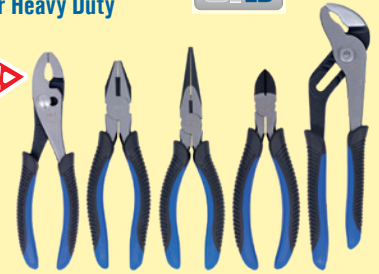
720507 JHSS-14 | List \$149.95

SALE \$86.95

5 PC Industrial Pliers Set - Super Heavy Duty



NEW!



- For heavy-duty industrial applications

730306 JIPS-5SHD | List \$155.15

SALE \$89.95

9 PC Cushion Grip Screwdriver Set



- Patented SVCM tool steel is up to 30% stronger than CrV screwdrivers
- Integrated cushion grips provide all day comfort and increase torque
- Slot round shank: 3/16" x 3", 1/4" x 4", 5/16" x 6"
- Phillips: #1 x 3", #2 x 4", #3 x 6"
- Square: #1 x 4", #2 x 4", #3 x 4"

720564 JKS-9S | List \$155.15

SALE \$89.95

6 PC Precision Screwdriver Set

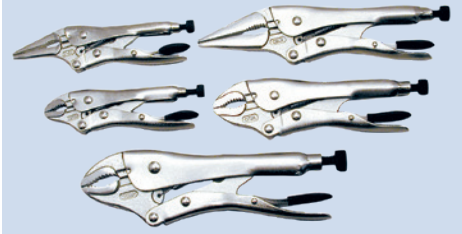


- Slot: 2.0, 3.0, 4.0
- Phillips: #00, #0, #1

720542 JPSP-6 | List \$51.65

SALE \$29.95

5 PC Locking Pliers Set - Super Heavy Duty



- Curved jaw: 5", 7", 10"
- Long nose: 6", 9"

730335 LPS-5 | List \$155.15

SALE \$89.95

9 PC VDE Insulated Screwdriver Set



- Electrically shielded tool for use on live circuits and hybrid automobiles
- Individually tested and VDE certified to 1,000V

760202 JISD-9S | List \$129.25

SALE \$74.95

3 PC Aviation Snip Set - Super Heavy Duty



- Induction hardened for professional use
- Non-slip TPR grips

735305 JAS-3S | List \$86.15

SALE \$49.95

4 PC Starter Pliers Set



- Double dipped cushion grip handles provide sure grip and all day comfort
- Contains 4 of the most popular sizes

730311 JPS-4N | List \$65.45

SALE \$37.95

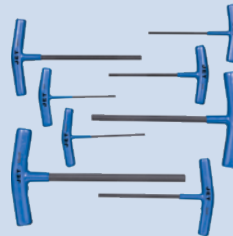
L-Handle Ball Nose Hex Key Wrenches - Sets



- 775104: 5/64 - 3/8"
- 775106: 2.0 - 10 mm
- S2 steel
- Blow mould case

PROD. NO.	MOD. NO.	Pieces	List	Sale
775104	JTHK-9	9	\$155.15	\$79.95
775106	JTHK-9M	9	\$155.15	\$79.95

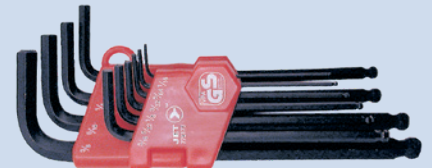
T-Handle Hex Key Sets



- PVC grip provides comfort

PROD. NO.	MOD. NO.	Sizes	List	Sale
775105	JTHK-8M	2.0, 2.5, 3.0, 4.0, 5.0, 6.0, 8.0, 10 mm	\$86.15	\$49.95
775109	JTHK-10	3/32, 7/64, 1/8, 9/64, 5/32, 3/16, 7/32, 1/4, 5/16, 3/8"	\$103.40	\$59.95

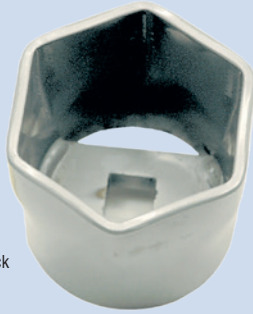
Ball Nose Hex Key Sets



- 775173: 1/16 - 3/8"
- 775184: 1.5 - 10 mm
- CrV steel

PROD. NO.	MOD. NO.	Pieces	List	Sale
775173	JBHK-10	10	\$30.95	\$17.95
775184	JBHK-9M	9	\$29.25	\$16.95

Truck Wheel Bearing Locknut Sockets



- Specially designed sockets used for the quick removal of truck wheel bearing locknuts
- All sockets are 3/4" drive

PROD. NO.	Size	List	Sale
H2150	2-3/32"	\$57.55	\$33.95
H2151	2-3/8"	\$62.40	\$36.50
H2153	2-9/16"	\$54.40	\$31.50
H2155	3"	\$57.60	\$33.50
H2157	3-1/4"	\$56.60	\$32.95
H2159	3-1/2"	\$54.40	\$31.50
H2161	3-7/8"	\$60.10	\$34.95
H2163	4"	\$60.10	\$34.95
H2164	4-1/8"	\$57.70	\$33.95
H2169	2-1/4"	\$56.60	\$32.95
H2170	2-1/2"	\$56.60	\$32.95
H2171	2-5/8"	\$54.35	\$31.50
H2172	2-3/4"	\$56.75	\$32.95
H2179	2-7/8"	\$56.60	\$32.95
H2186	3-3/4"	\$62.40	\$36.50

Slide Hammer Multi-Purpose Puller Kit - Heavy Duty



- Applies to 4.5 and 6 bolt stud circles that range from 4-1/4" to 5-9/16"

H3560 | List \$396.60

SALE \$229.95

Double Flaring Tool Kit SAE



- Double flare adapters provided for 3/16, 1/4, 5/16, 3/8, 1/2" tubing

H1120 | List \$112.00

SALE \$64.95

15-in-1 Multi-Bit Screwdriver



- 7 double end bits give you 14 screwdriver tips
- S2 alloy steel bits Rockwell 59 +/- 2HRC

H3400 | List \$46.50

SALE \$26.95

Dial Type Tire Pressure Gauge



- Needle holds readings until released by pressing relief button
- Range: 10 – 100 PSI, lb/KPa reading

H3266 | List \$20.60

SALE \$11.95

5 PC Screw Extractor Set



- Chrome molybdenum steel

H1273 | List \$49.95

SALE \$28.95

Chrome Series Kits

PROD. NO.	Description	Range	List	Sale
HTA1106	Ammeter Gauge Kit	60-0-60+	\$33.60	\$19.50
HTA1109	Volt Gauge Kit	8 – 16 Volts	\$57.15	\$32.95
HTA1118	Mechanical Water Temperature Gauge Kit	130°F to 280°F (50°C to 140°C)	\$63.25	\$36.95
HTA1125	Wide Sweep Mechanical Water Temperature - 66" Capillary Tube Gauge Kit	130°F to 280°F (50°C to 140°C)	\$77.35	\$44.95
HTA1136	Electrical Water and Oil Temperature Gauge Kit	130°F to 290°F (60°C to 140°C)	\$77.35	\$44.95
HTA1144	Mechanical Oil Pressure Gauge Kit	0 – 80 PSI	\$47.65	\$24.95
HTA1150	Wide Sweep Mechanical Oil Pressure Gauge Kit	0 – 100 PSI	\$60.90	\$35.50
HTA1153	Electrical Oil Pressure Gauge Kit	0 – 100 PSI	\$83.85	\$48.95
HTA1154	Manifold Vacuum Gauge Kit	0 – 25 lb	\$47.65	\$27.95
HTA1156	Mechanical Water Temperature - 96" Capillary Tube	130°F to 280°F (50°C to 140°C)	\$81.05	\$46.95



Digital Automotive Multimeter



- Full-range – performs complete tune-up and troubleshooting tests on all vehicles.
- Includes tests such as tach and dwell, test fuel injectors, sensors, alternators, spark plug wires, ignition and charging systems, battery condition and cranking voltage.
- Easy-to-read digital LCD
- Data hold function
- Computer safe

H3630 | List \$275.85

SALE \$159.95

Digital Calipers



- Resolution 0.0005" / 0.01 mm
- Extra large LCD screen
- Stainless steel

PROD. NO.	MOD. NO.	List	Sale
310131	JEDC-6	\$98.20	\$56.95
310132	JEDC-8	\$149.95	\$86.95

6" Fractional Digital Caliper



- SAE, metric and fractional display
- Resolution 0.0005" / 1/64" / 0.01 mm
- Stainless steel

310133 JEDC-6F | List \$108.55

SALE \$62.95

450°C Non Contact Thermometer



SUPER SPECIAL

- -20°C – 450°C
- Laser aiming point

310016 JIRT-450 | List \$344.85

SALE \$169.95

Steel Pipe Wrenches

- Hardened chrome vanadium steel hook and heel jaws
- Induction hardened teeth

PROD. NO.	MOD. NO.	Length	List	Sale
710142	JPW-8	8" (203 mm)	\$21.95	\$16.95
710143	JPW-10	10" (250 mm)	\$25.80	\$19.95
710144	JPW-12	12" (300 mm)	\$31.95	\$24.95
710145	JPW-14	14" (355 mm)	\$37.45	\$28.95
710147	JPW-18	18" (450 mm)	\$51.65	\$39.95
710150	JPW-24	24" (600 mm)	\$79.95	\$61.95
710156	JPW-36	36" (915 mm)	\$155.15	\$119.95
710159	JPW-48	48" (1,220 mm)	\$232.75	\$179.95



710142

Aluminum Pipe Wrenches



710247

- Hardened chrome vanadium steel hook and heel jaws
- Induction hardened teeth

PROD. NO.	MOD. NO.	Length	List	Sale
710247	JPWA-18	18" (450 mm)	\$75.65	\$58.50
710250	JPWA-24	24" (600 mm)	\$109.95	\$84.95
710256	JPWA-36	36" (915 mm)	\$219.85	\$169.95

1-1/8" Mini Tubing Cutter



- 1/8 - 1-1/8" (3 - 30 mm)
- 739109 JMTC-30 | List \$35.00

SALE \$19.95

1-5/8" PVC Pipe Cutter

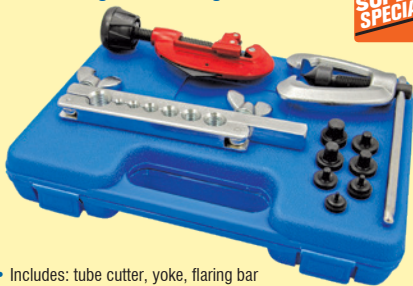


SUPER SPECIAL

- 1-5/8" (42 mm)
- 739116 JPPC-42 | List \$45.20

SALE \$19.95

Tube Flaring and Cutting Kit



SUPER SPECIAL

- Includes: tube cutter, yoke, flaring bar and double flaring inserts

739181 JTFK-100 | List \$160.45

SALE \$79.95

High Tensile Bolt Cutters



- Cuts material up to HRC48
- Induction hardened teeth

PROD. NO.	MOD. NO.	Length	List	Sale
731238	BCR-18	18"	\$77.55	\$59.95
731244	BCR-24	24"	\$103.40	\$79.95
731256	BCR-36	36"	\$193.95	\$149.95

Bolt & Rod Cutters



- Chrome moly blades

PROD. NO.	MOD. NO.	Length	List	Sale
731112	BC-12	12"	\$60.75	\$46.95
731114	BC-14	14"	\$64.60	\$49.95
731118	BC-18	18"	\$82.70	\$63.95
731124	BC-24	24"	\$98.25	\$75.95
731130	BC-30	30"	\$142.20	\$109.95
731136	BC-36	36"	\$193.95	\$149.95
731142	BC-42	42"	\$297.45	\$229.95

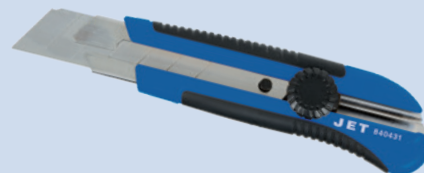
Wire Strippers/Cutters/Crimpers



- 730724: 8 - 26 AWG
- 730725: 10 - 22 AWG

PROD. NO.	MOD. NO.	Overall Length	List	Sale
730724	JMWS-81024	8-1/4"	\$41.30	\$23.95
730725	JMWS-9618	9"	\$43.05	\$24.95

25 mm Jumbo Snap-Off Utility Knife



- Ergonomic over-mould rubber grip
- SK5 25 mm steel blade
- Slide-lock blade advance

840431 JSBK-25 | List \$17.15

SALE \$9.95

Folding Utility Knife - Heavy Duty



- Durable all-metal construction
- SK5 steel blade

840411 JFFK-100 | List \$22.35

SALE \$12.95

Sledge Hammers - Fibreglass Handle



PROD. NO.	MOD. NO.	Head Weight	List	Sale
740532	SH-4F	4 lb	\$44.75	\$25.95
740533	SH-6F	6 lb	\$82.95	\$47.95
740534	SH-8F	8 lb	\$89.95	\$51.95
740535	SH-10F	10 lb	\$99.95	\$57.95
740536	SH-12F	12 lb	\$109.95	\$63.95
740538	SH-16F	16 lb	\$129.95	\$75.95

Sledge Hammers - Indestructible Handle



- Spring steel rods encased in vulcanized rubber provide the ultimate striking tool handle
- Will not break, bend, or split, even after repeated overstrikes

PROD. NO.	MOD. NO.	Head Weight	List	Sale
740580	USH-250	2.5 lb	\$93.05	\$53.95
740581	USH-412	4 lb	\$99.95	\$57.95
740582	USH-416	4 lb	\$118.90	\$68.95
740583	USH-624	6 lb	\$186.15	\$107.95
740584	USH-630	6 lb	\$189.60	\$109.95
740585	USH-824	8 lb	\$198.25	\$114.95
740586	USH-830	8 lb	\$206.85	\$119.95
740587	USH-1030	10 lb	\$232.75	\$134.95
740588	USH-1230	12 lb	\$263.80	\$152.95
740589	USH-1430	14 lb	\$272.40	\$157.95
740593	USH-616	6 lb	\$155.15	\$89.95
740596	USH-836	8 lb	\$270.70	\$156.95
740598	USH-1236	12 lb	\$327.60	\$189.95

Tape Measures



- Ergonomic rubber grip

PROD. NO.	MOD. NO.	Width	List	Sale
775921	JTM-416SM	1"	\$12.90	\$7.50
775929	JTM-425SM	1"	\$20.60	\$11.95

12" Combination Square



- Stainless steel blade
- 776065 JCS-12** | List \$29.95

SALE \$17.95

Box Levels



SUPER SPECIAL

- 3 vials read level, plumb, and 45°

PROD. NO.	MOD. NO.	Length	List	Sale
776001	JBL-9924B	24"	\$37.85	\$19.95
776002	JBL-9948B	48"	\$61.05	\$29.95
776004	JBL-9972B	72"	\$99.05	\$49.95

16" x 24" Rafter Square



- 1/8" increments
- 776060 JSRS-1624** | List \$34.40

SALE \$19.95

Ball Pein Hammers - Fibreglass Handle



PROD. NO.	MOD. NO.	Head Weight	List	Sale
740161	BP-08F	8 oz	\$26.25	\$14.95
740163	BP-16F	16 oz	\$32.50	\$18.95
740164	BP-24F	24 oz	\$38.95	\$22.95
740165	BP-32F	32 oz	\$46.50	\$26.95
740166	BP-40F	40 oz	\$42.55	\$24.95

16 oz Claw Hammer - Fibreglass Handle



740347 CF16F | List \$32.70

SALE \$18.95

Punch and Chisel Sets



- Dual hardened
- With roll-up pouch

PROD. NO.	MOD. NO.	Pieces	List	Sale
775508	PC16-1S	16	\$237.90	\$137.95
775513	PC24S	24	\$275.85	\$159.95

6 PC Roll Pin Punch Set



- 3/32 - 5/16"
- Dual hardened
- With roll-up pouch

775526 RPP-6S | List \$67.15

SALE \$38.95

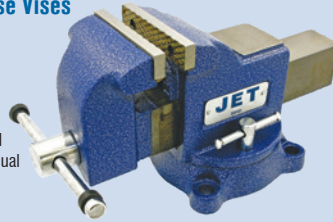
C-Clamps



- Drop forged for maximum strength
- Extra deep throat

PROD. NO.	MOD. NO.	Maximum Opening	List	Sale
390122	CC-2D	2-1/8"	\$19.35	\$14.95
390123	CC-3D	3"	\$32.25	\$24.95
390124	CC-4D	4-1/4"	\$42.60	\$32.95
390125	CC-6D	6-1/16"	\$64.60	\$49.95
390126	CC-8D	8-1/4"	\$86.60	\$66.95
390127	CC-10D	10-1/8"	\$129.30	\$99.95
390129	CC-12D	12-1/4"	\$168.10	\$129.95

Swivel Base Vises



- 360° swivel base with dual lock down handles

PROD. NO.	MOD. NO.	Jaw Width	List	Sale
320151	JSV-4HD	4"	\$155.15	\$119.95
320152	JSV-5HD	5"	\$206.90	\$159.95
320153	JSV-6HD	6"	\$258.65	\$199.95
320154	JSV-8HD	8"	\$388.00	\$299.95

17" 1 HP 16 Speed Floor Drill Press

- Powerful 1 horse power motor
- Full 17" swing for easy drilling of larger work pieces
- 16 speed capability allows for a broad assortment of drilling applications
- Safety on/off switch with removable lock key
- Fully hinged belt and pulley cover and quick adjust motor mount permit fast changes of spindle speed
- Worktable with quick release clamp rotates and tilts to 45° right and left



200278 JDP-17F | List \$1,357.35

SALE \$999.00

20 Gallon Parts Washer - Heavy Duty



- 41.8 litre working capacity

355007 JPW-20 | List \$332.80

SALE \$244.95

Bench Grinders



- Heavy duty construction for maximum service life
- CSA electrics for safety and reliability
- All ball bearing construction
- Steel wheel covers with rear dust exhaust ports
- Easy to adjust steel tool rests
- Eye shields and spark guards for operator safety
- Rubber feet on base for reduced vibration
- Includes coarse and medium grinding wheels

PROD. NO.	MOD. NO.	Motor	List	Sale
240153	BGC-6	1/3 HP, 1 Ph, 115 V	\$258.10	\$189.95
240154	BGC-8	1/2 HP, 1 Ph, 115 V	\$349.10	\$256.95

7" x 12" Horizontal Bandsaw

- Heavy duty cast iron construction for accuracy and durability
- Three speed gear box replaces less efficient belt drive systems found on most comparable machines
- Horizontal cutting feed rate controlled by a fully adjustable hydraulic ram



222332 JHVG-712 | List \$3,531.25

SALE \$2,599.00

Barrel Pump - Rotary - Heavy Duty



- Cast iron body
- Pumps in either direction

350103 HRP-25 | List \$145.50

SALE \$99.95

Lever Grease Gun - Heavy Duty



- Includes rigid hose
- 3-way loading capability

350152 JLGG-14HD | List \$50.90

SALE \$34.95

Pistol Grip Grease Gun - Heavy Duty



- Includes 4" rigid hose & 18" flex hose

350155 JPGG-14HD | List \$72.70

SALE \$49.95

24 US Gallon (90 Litre) Waste Oil Drain - Heavy Duty



- 78" long drainage hose
- Tank mounted oil-level sight gauge

350511 JOIDR90 | List \$762.15

SALE \$529.95

15 US Gallon (56 Litre) Low Profile Steel Tank Oil Drain

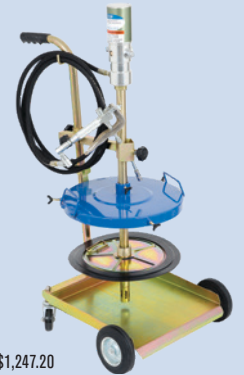


- Ideal for draining oil where a pit or hoist is not available
- Convenient rotary hand pump for fast evacuation to large oil collection tanks

350515 JOIDRLPM | List \$554.30

SALE \$379.95

120 lb Air Operated Grease Pump Kit - Heavy Duty



- Pumps up to 1.76 lb per minute (27 oz)
- Comes with 4-wheel roll around cart

350307 JAGP-120 | List \$1,247.20

SALE \$859.95

26" x 12" 6 Drawer B&G Series Mechanic's Chest

WHILE QUANTITIES LAST



- Ball bearing slides
- Extra heavy gauge steel for medium to heavy duty applications

842652 MC2606-BG | List \$447.85

SALE \$329.95

26" x 16" 6 Drawer B&G Series Mechanic's Chest

WHILE QUANTITIES LAST



- Ball bearing slides
- Extra heavy gauge steel for medium to heavy duty applications

842653 MC2606D-BG | List \$519.00

SALE \$369.95

26" x 12" 9 Drawer B&G Series Mechanic's Chest

WHILE QUANTITIES LAST



- Ball bearing slides
- Extra heavy gauge steel for medium to heavy duty applications

842654 MC2609-BG | List \$519.00

SALE \$369.95

27" x 18" 5 Drawer B&G Series Roller Cabinet

WHILE QUANTITIES LAST



- Ball bearing slides
- Extra heavy gauge steel for medium to heavy duty applications

842602 RC2705-BG | List \$774.40

SALE \$389.95

27" x 18" 7 Drawer B&G Series Roller Cabinet

WHILE QUANTITIES LAST



- Ball bearing slides
- Extra heavy gauge steel for medium to heavy duty applications

842604 RC2707-BG | List \$923.85

SALE \$499.95

41" x 18" 14 Drawer B&G Series Mechanic's Chest

WHILE QUANTITIES LAST



- Ball bearing slides
- Extra heavy gauge steel for medium to heavy duty applications

842663 MC4114-BG | List \$1,168.40

SALE \$699.95

56" x 24" 9 Drawer B&G Series Mechanic's Chest

WHILE QUANTITIES LAST



- Ball bearing slides
- Extra heavy gauge steel for medium to heavy duty applications

842673 MC5609-BG | List \$1,847.75

SALE \$1,179.95

56" x 24" 13 Drawer B&G Series Roller Cabinet



- Ball bearing slides
- Extra heavy gauge steel for medium to heavy duty applications

842623 RC5613-BG | List \$2,850.55

SALE \$1,795.00

41" x 18" 10 Drawer B&G Series Roller Cabinet

WHILE QUANTITIES LAST



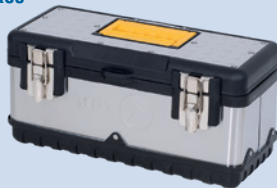
- Ball bearing slides
- Extra heavy gauge steel for medium to heavy duty applications

842613 RC4110-BG | List \$1,614.05

SALE \$819.95

Portable Tool Boxes

- Combination of stainless steel and plastic components, offers great strength with low weight
- Will not rust
- Removable tool tray



PRODD. NO.	MOD. NO.	Width	List	Sale
842152	JPSTB-15	15"	\$43.00	\$32.95
842153	JPSTB-20	20"	\$64.60	\$49.95
842154	JPSTB-22	22-1/2"	\$87.45	\$67.95

24" Open Top Tool Bag



- Premium quality 1680D polyester
- Interior size 24" x 10" x 11"
- Tools not included

842002 JZTB-24 | List \$125.40

SALE \$89.95

Polypropylene Shop Cart - Heavy Duty



- 36" x 24" shelves
- Will not dent, rust, chip, or peel

842909 JPTC-3624 | List \$297.45

SALE \$229.95

Cut-Off Wheels (T1 for Angle Grinders)



TYPE 1

- Designed for high performance cutting of steel and stainless steel materials
- Made from highly refined ingredients; these Fe+S+Cl free wheels are specially formulated for cutting steel and contamination/burn free cutting of all stainless steels



PROD. NO.	Size	Thickness	Thickness	List	Sale
501521	4-1/2" x 3/64" x 7/8"	1.2 mm	.045"	\$3.15	\$2.25
501526	5" x 3/64" x 7/8"	1.2 mm	.045"	\$3.30	\$2.40
501531	6" x 3/64" x 7/8"	1.2 mm	.045"	\$4.70	\$3.40

Cut-Off Wheels (T27 for Angle Grinders)



TYPE 27

- These high performance cut-off wheels offer fast cutting and excellent overall wheel life
- Specially formulated cutting on steel and stainless steel applications



PROD. NO.	Size	Thickness	Thickness	List	Sale
501621	4-1/2" x 3/64" x 7/8"	1.2 mm	.045"	\$3.30	\$2.40
501626	5" x 3/64" x 7/8"	1.2 mm	.045"	\$3.50	\$2.55
501631	6" x 3/64" x 7/8"	1.2 mm	.045"	\$5.05	\$3.65

Cutting & Light Grinding Wheels (T27 for Angle Grinders)



TYPE 27

- Specially designed dual purpose wheels for high performance cutting and light grinding of both steel and stainless steel materials
- Ideal for notching, root pass cleaning, chamfering, deburring and much more



PROD. NO.	Size	Grade	Max. RPM	List	Sale
501653	4-1/2" x 5/64" x 7/8"	A46PX-DUO	13,300	\$4.75	\$3.45
501656	5" x 5/64" x 7/8"	A46PX-DUO	12,200	\$5.10	\$3.70

Grinding Wheels (T27 for Angle Grinders)



TYPE 27

- Specially formulated for high performance grinding in a wide range of steel grinding operations
- Made with high quality abrasive grains for faster grinding results with less effort



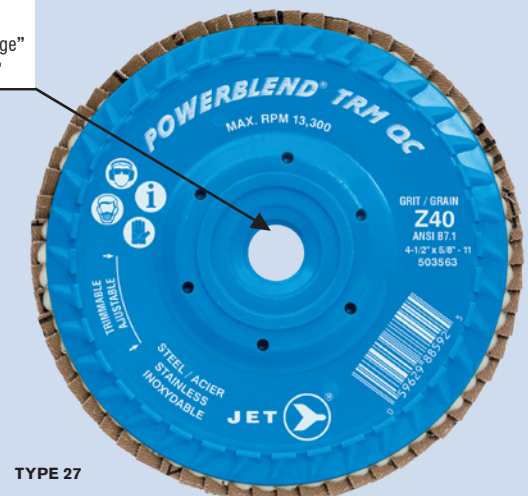
PROD. NO.	Size	Grade	Max. RPM	List	Sale
500418	4-1/2" x 1/4" x 7/8"	A24R	13,300	\$4.40	\$2.95
500428	5" x 1/4" x 7/8"	A24R	12,200	\$4.75	\$3.15
500432	6" x 1/4" x 7/8"	A24R	10,200	\$6.55	\$4.35

Flap Discs (for Angle Grinders)

- Zirconia grain flaps for fast, cool cutting and extra-long life on steel and stainless steel
- The 5/8-11 "Quick Change" arbor increases productivity by reducing time spent on wheel change outs
- Trimable backing pad for extended disc life

PROD. NO.	Grit	Max. RPM	Type	List	Sale
503563	Z40	13,300	27	\$11.35	\$8.20
503565	Z60	13,300	27	\$11.35	\$8.20
503567	Z80	13,300	27	\$11.35	\$8.20
503569	Z120	13,300	27	\$11.35	\$8.20
503573	Z40	12,200	27	\$13.50	\$9.75
503575	Z60	12,200	27	\$13.50	\$9.75
503577	Z80	12,200	27	\$13.50	\$9.75
503579	Z120	12,200	27	\$13.50	\$9.75

5/8-11 "Quick Change" arbor



TYPE 27

Stringer Bead Brushes - High Performance

NEW!



- Made from top quality wire that is designed to offer outstanding performance and long life
- Each tuft is precisely positioned and set for perfect balance and vibration free operation
- High grade construction ensures maximum operator safety and fast material removal

PROD. NO.	Diameter	Min. Face Width	List	Sale
553488	4-1/2"	1/4"	\$25.50	\$17.95
553492	5"	1/4"	\$28.10	\$20.65
553496	6"	1/4"	\$31.25	\$22.95

Knot Cup Brushes

NEW!



- Made with high tensile stainless steel wire to prevent contamination of stainless steel materials
- Can also be used on aluminum and other non-ferrous metals

PROD. NO.	Diameter	Arbor Hole (inches)	List	Sale
553665	2-3/4"	5/8"-11NC	\$39.50	\$28.95
553667	3"	5/8"-11NC	\$44.30	\$31.95

Conical (Bevel) Brushes

NEW!



- Made with high tensile stainless steel wire to prevent contamination of stainless steel materials
- Can also be used on aluminum and other non-ferrous metals

PROD. NO.	Diameter	Arbor Hole (inches)	List	Sale
554359	4-1/2"	5/8"-11NC	\$33.20	\$23.95
554361	5"	5/8"-11NC	\$35.95	\$25.95

3 x 5/8"-11NC Crimped Cup Brush

SUPER SPECIAL



- JET crimped wire cup brushes are made with quality piano wire (tempered high carbon steel) for fast brushing action and maximum life
- Designed for surface cleaning, rust and paint removal, and light deburring on large flat surfaces

554100 CC318T | List \$15.75

SALE

\$10.50

3 x 5/8"-11NC Knot Twisted Cup Brush - High Performance

SUPER SPECIAL



- Used on angle grinders for heavy duty cleaning, weld and scale removal, deburring and general heavy duty brush work

554203 CK3201T | List \$19.35

SALE

\$12.95

2-3/4 x 5/8"-11NC Knot Banded Cup Brush

SUPER SPECIAL



- JET knot banded wire cup brushes are similar to a regular knot style cup brush but have the added feature of a band or knock-off ring

553605 CKB2201T | List \$27.65

SALE

\$18.45

6 PC JET-KUT® Carbide Bur Set - Premium

NEW!



- These double cut tungsten carbide burs are designed for shaping, smoothing and material removal of hardened steel, stainless steel, cast iron, non-ferrous metals, fired ceramics, plastics and hardwoods - especially on hard materials up to HRC-65

534202 CBHP-6 | List \$138.50

SALE

\$99.95

8 PC JET-KUT® Carbide Bur Set - Premium

NEW!



- These double cut tungsten carbide burs are designed for shaping, smoothing and material removal of hardened steel, stainless steel, cast iron, non-ferrous metals, fired ceramics, plastics and hardwoods - especially on hard materials up to HRC-65

534212 CBHP-8 | List \$180.15

SALE

\$129.95

1/2" DR Impact Wrench - Heavy Duty



- Produces 550 ft-lb of hard hitting torque
- Weighs only 5.7 lb
- Twin Hammer mechanism provides more power and smooth, balanced impact blows for reduced vibration

400252 AW50AT | List \$232.85

SALE \$159.95

1/2" Composite Impact Wrench - Super Heavy Duty

SUPER SPECIAL



- Specially treated anvil for long service life
- Internal one piece construction reduces power loss
- Produces 780 ft-lb of nut wrenching torque in reverse

400242 AW500C | List \$298.85

SALE \$199.95

3/4" DR Composite Series Impact Wrench - Super Heavy Duty



- Produces 1,250 ft-lb of nut wrenching torque in Reverse
- "Push Through" Forward / Reverse control conveniently allows
- one hand directional change
- Weighs only 7.74 lb

400340 AW19CSDP | List \$786.05

SALE \$539.95

3/4" DR Magnesium Series Impact Wrench - Super Heavy Duty



- Produces 1,200 ft-lb of nut wrenching torque in reverse
- Ultimate power in reverse
- maximizes removal of stubborn rusted nuts
- Super strong magnesium body
- Incredibly lightweight – only 11.3 lb

400313 AW19MSD | List \$763.45

SALE \$524.45

1" DR Impact Wrenches - Super Heavy Duty



- Produces an incredible 2,100 ft-lb of nut wrenching torque in reverse
- Ultimate power in reverse maximizes removal of stubborn rusted nuts
- Weighs only 22 lb – unheard of power to weight performance – compare traditional models at over 30 lb
- Lightweight "Back Saver Technology" ensures maximum operator comfort and safety, and minimum fatigue during use

PROD. NO.	MOD. NO.	Anvil Size	Max. Torque - Forward	List	Sale
400443	AW25ASD2	1" x 2"	1,800 ft-lb	\$1,149.00	\$789.30
400444	AW25ASD6	1" x 6"	1,800 ft-lb	\$1,164.50	\$799.95



Hybrid Air Hoses



- Polymer construction for the heaviest duty applications
- UV, ozone, and chemical resistance for longevity
- 300 PSI max working pressure, 1,200 PSI burst pressure
- Temperature range: -40°C (-40°F) to +82°C (180°F)

PROD. NO.	MOD. NO.	ID Size	Hose Length	List	Sale
408193	AH3825HY	3/8"	25'	\$51.20	\$36.95
408194	AH3850HY	3/8"	50'	\$78.95	\$56.95
408195	AH1225HY	1/2"	25'	\$69.20	\$49.95
408196	AH1250HY	1/2"	50'	\$117.75	\$84.95

Air Blow Guns



- 1/4" NPT air inlet with extra nozzle

PROD. NO.	MOD. NO.	List	Sale
409902	AG16	\$15.90	\$11.45
409903	ABG-4	\$16.55	\$11.95
409904	ABG0-4	\$17.95	\$12.95

2 PC Air Filter, Regulator and Lubricator 1/2" NPT - Standard



- Filters: Clean air maximizes tool life, reduces repair and replacement costs, minimizes downtime
- Regulators: Controlled air flow maximizes tool performance and shop productivity
- Lubricators: Proper lubrication maximizes tool performance, life and shop productivity

408804 AFRLCS12 | List \$304.80

SALE \$219.95

.3 HP 1/4" Mini Die Grinder



- Rear exhaust
- Positive speed control
- 25,000 RPM

402109 MDG1 | List \$96.95

SALE \$69.95

3" Cut-Off Tool - Heavy Duty



- Powerful .6 horsepower motor
- Rear exhaust, compact motor housing
- Premium motor cylinder and 6 vane motor design for improved performance and life

409015 CO3HD | List \$221.65

SALE \$147.95



.3 HP 1/4" Mini 90° Angle Head Die Grinder



- Front exhaust
- Positive speed control
- 18,000 RPM

402110 MDG90 | List \$117.75

SALE \$84.95

.6 HP 1/4" 90° Angle Head Die Grinder - Heavy Duty



- Rear exhaust, compact motor housing
- New improved drive gear system for longer life in heavy applications

402113 MG90HD | List \$332.55

SALE \$239.95

.6 HP 1/4" Mini Die Grinder - Heavy Duty



- Front exhaust, compact motor housing – only 5-3/4" long!

402114 MG1HD | List \$152.40

SALE \$109.95

3/8" Reversible Drill - Keyed Chuck



- Hardened steel planetary gears for long life performance
- Excellent power-to-weight ratio

404415 ADX38OR | List \$145.50

SALE \$99.95

1/2" Reversible Drill - Keyed Chuck - Heavy Duty



- Heavy duty motor with double reduction planetary gear system to 800 RPM provides exceptional power
- Reverse switch situated for fast and easy one handed operation

404422 ADR12HD | List \$363.85

SALE \$249.95

Pistol Grip Air Shear - Heavy Duty



- Features a two gear, heavy duty planetary system for increased torque
- 2,200 SPM

404163 PAS18 | List \$235.55

SALE \$169.95

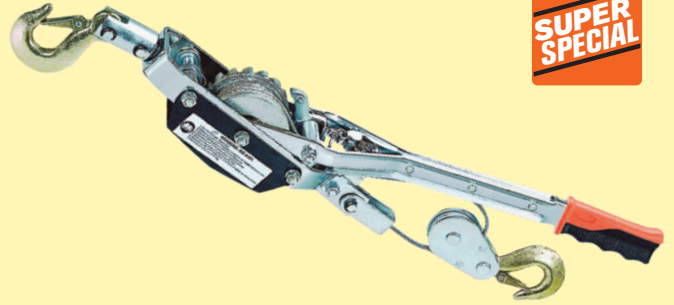
Lever Chain Pullers



- Light weight design combines versatility with economy
- Load tested to 150% of rated capacity
- Patented brake system – lasts 5 times longer!

PROD. NO.	MOD. NO.	Rated Lifting Capacity	Standard Lift	Number of Falls	List	Sale
110603	VLP-25-5	1/4 T	5'	1	\$217.35	\$156.85
110604	VLP-50-5	1/2 T	5'	1	\$258.10	\$186.25

Hand Cable Pullers



- Single pawl

PROD. NO.	MOD. NO.	Rated Pulling Capacity	Rated Lifting Capacity	Number of Pawls	List	Sale
111225	JCPP-200	2 T	1 T	1	\$87.25	\$58.95
111228	JCPP-400D	4 T	2 T	2	\$159.15	\$104.95

Plate Clamps



- Tested to 200% of rated capacity

PROD. NO.	MOD. NO.	Rated Lifting Capacity	Jaw Opening	List	Sale
109302	SPC-100	1 T	0 – 7/8"	\$189.00	\$136.40
109304	SPC-200	2 T	0 – 1-3/16"	\$269.00	\$194.10
109305	SPC-300	3 T	0 – 1-3/8"	\$388.00	\$279.95

3,100 PSI High Pressure Washer



- Powered by a reliable 212cc JET engine
- 3,100 PSI, 2.3 GPM
- Mounted on a rugged powder coated steel frame
- 25' of high quality rubber high pressure hose
- Quick connect nozzles in 0°, 15°, 40°, and soap nozzle

291001 JPW3100L

SALE \$633.45

Water Pumps



- Commercial grade aluminum housing
- Cast iron impeller and volutes

PROD. NO.	MOD. NO.	Inlet or Discharge	Engine	Sale
291037	JWP20L	2" NPT	JET	\$408.90
291038	JWP30L	3" NPT	JET	\$441.85

5,000 PSI Rotary Nozzle

- This rotary nozzle cleans faster than a regular nozzle. It is great for stripping paint or cleaning concrete surfaces
- Includes a 5,000 rated inline filter to reduce wear and keep the nozzle orifice clear



291409 PWRNWF

SALE \$105.90

3,200 PSI Rotary Nozzle

- This rotary nozzle cleans faster than a regular nozzle
- It is great for stripping paint or cleaning concrete surfaces
- Use this with any pressure washer equipped with quick connect and a minimum of 2.0 GPM of water flow



291427 PWRNSD

SALE \$54.00

4,000 PSI High Pressure Washer

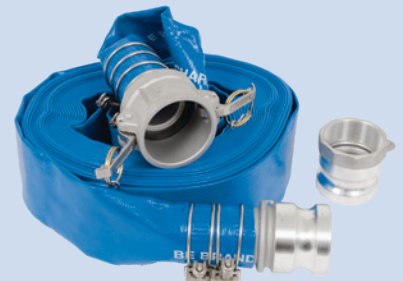


- Powered by a reliable 420cc JET engine
- 4,000 PSI, 4.0 GPM
- Mounted on a rugged powder coated steel frame
- 50' of 3/8" rubber hose resists kinking
- Quick connect nozzles in 0°, 15°, 40°, and soap nozzle

291005 JPW4000L

SALE \$1,323.55

Water Pump Discharge Hoses



- Discharge hoses come with a Camlock system
- Rated for a working temperature of 150°F
- Camlock hoses are easier to attach and detach from the pump

PROD. NO.	MOD. NO.	Size	Length	Sale
291475	WPD250	2"	50'	\$106.00
291476	WPD350	3"	50'	\$149.00

Headlamps

- Combination SMD and COB technology for long distance or wide angle lighting
- Cree XPG SMD provides the ultimate in long distance lighting
- Both light sources feature Low, High, Strobe, and Variable functions
- Hold down either power button to precisely adjust light level to suit your task



NEW

PROD. NO.	MOD. NO.	Run Time @ Low Power	Batteries	List	Sale
849822	JLHL-250	10 hrs	3 x AAA	\$36.15	\$27.95
849823	JUHL-250	10 hrs	Li-Ion	\$51.65	\$39.95

COB Headlamp

- COB technology for wide angle and close up work
- High, Low, and Strobe functions
- IP54 rated for outdoor use
- Sold in 6 pc POP display only



NEW

849824 JLHL-150 | List \$25.80

SALE \$19.95

Folding COB Work Light

NEW

- Combination COB and SMD technology for use as a work light or flashlight
- Lithium-Ion battery is USB chargeable using any compatible charging block
- Ultra-thin wand gets light into the tightest spaces
- Wand moves 180° and rotates 270° to put the light where you need it



849856 JUFL-500 | List \$116.35

SALE \$89.95

COB Pivot Light

- Combination COB and SMD technology for use as a work light or flashlight
- Lithium-Ion battery is USB chargeable using any compatible charging block
- Pivot base with integrated magnet allows light to stand on any surface or be mounted to any metal surface
- Combination suspension hook and belt hook for mounting light or conveniently attaching to your belt



NEW

849854 JUPL-240 | List \$64.60

SALE \$49.95

Aluminum Pivot Base Work Light

- Super bright COB element with aluminum reflector provides up to 400 lumens of shadow-free light
- Robust all aluminum body stands up to the toughest environments
- Rechargeable Lithium-Ion battery works when on the charger for longer working time
- Pivot base with integrated magnet and suspension hook provides hands-free options



NEW

849241 JAPL-400SHD | List \$64.60

SALE \$49.95

Work Site Lights

- Highly efficient Surface Mounted Diode technology provides brilliant white light with minimal power consumption
- Stays cool to the touch even after all day use
- 6500K colour temperature ideally mimics daylight for true colour reproduction



PROD. NO.	MOD. NO.	Power	List	Sale
849903	SW-20	125 V-60 Hz	\$94.35	\$69.95
849915	SWL-50	125 V-60 Hz	\$175.85	\$129.95

LED Work Light with Magnet

- 20 LED's
- 6' SJTW cord



849834 JLWL-20 | List \$51.65

SALE \$39.95

LED Flashlights

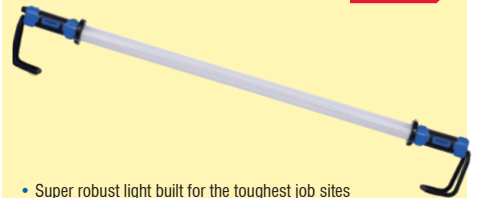
- SMD Technology
- Up to 100,000 hours lifetime



PROD. NO.	MOD. NO.	Max. Lumens	Run Time @ 100%	List	Sale
849802	JLPL-100	100	5 hrs	\$51.65	\$39.95
849812	JLFL-150	150	2 hrs	\$60.75	\$46.95
849817	JLFL-230	230	6 hrs	\$68.50	\$49.95
849818	JLFL-500	500	3 hrs	\$116.35	\$89.95
849819	JLFL-600U	600	2 hrs	\$81.40	\$62.95

High Performance LED Light Bar

NEW



- Super robust light built for the toughest job sites
- Up to 100,000 hours lifetime
- 7.4V 5200mAh Lithium ion battery for long run times and long life
- Works on or off the cord for maximum versatility and unlimited run time

849840 JALB-2000 | List \$310.40

SALE \$239.95

100' Temporary Light String

SUPER SPECIAL

- 10 lights per string
- Max 150W bulbs



849879 JTLS-14100 | List \$219.85

SALE \$119.95

16 Gauge Extension Cords

- SJTOW cord rated to -50°C
- Light indicates live power



PROD. NO.	MOD. NO.	Max. Watts	List	Sale
849841	JLEC-1625S	1,625	\$21.90	\$16.95
849842	JLEC-1650S	1,625	\$38.75	\$29.95
849843	JLEC-16100S	1,250	\$71.10	\$54.95

12 Gauge Extension Cords

- SJTOW cord rated to -50°C
- Light indicates live power



PROD. NO.	MOD. NO.	Max. Watts	List	Sale
849886	JLEC-1225	1,875	\$46.25	\$35.95
849887	JLEC-1250	1,875	\$86.00	\$66.95
849889	JLEC-12100	1,875	\$165.50	\$127.95



40 PC 1/4" DR SAE/Metric Socket Set



- Chrome Vanadium steel
- 5-1/2" quick release ratchet
- Shallow and deep: 3/16 – 1/2"
- Shallow and deep: 4 – 12 mm

020113 ISK-1440SM | List \$83.10

SALE

\$59.95

Chrome Socket Sets



- 8" Quick release ratchet
- 020123 : SAE
- 020124 : Metric

PROD. NO.	MOD. NO.	Contents	List	Sale
020123	ISK-3820S	3/8, 7/16, 1/2, 9/16, 5/8, 11/16, 3/4"	\$96.95	\$69.95
020124	ISK-3820M	10, 12, 13, 15, 17, 18, 19, 22 mm	\$96.95	\$69.95

49 PC 3/8" DR SAE/Metric Socket Set



- 8" quick release ratchet
- Regular: 3/8 – 7/8", 6 – 19 mm
- Deep: 3/8 – 7/8", 8 – 19 mm

020125 ISK-3849SM | List \$152.40

SALE

\$109.95

20 PC 1/2" DR SAE Socket Set



- 10" quick release ratchet
- Regular: 3/8 – 1-1/4"

020133 ISK-1220S | List \$152.40

SALE

\$109.95

24 PC 1/2" DR Metric Socket Set



- 10" quick release ratchet
- Regular: 10 – 32 mm

020134 ISK-1224M | List \$152.40

SALE

\$109.95

49 PC 1/2" DR SAE/Metric Socket Set



- 10" quick release ratchet
- Regular: 3/8 – 1-1/4", 10 – 32 mm
- Deep: 9/16 – 7/8", 13 – 22 mm

020135 ISK-1249SM | List \$263.25

SALE

\$189.95

Deep Impact Socket Sets

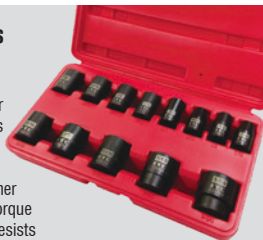
- Heat treated Chrome Molybdenum sockets for professional applications
- Torque-Drive® sockets apply torque to flats of fasteners to prevent corner rounding and increase torque
- Black phosphate finish resists corrosion and will not peel



PROD. NO.	MOD. NO.	Contents	List	Sale
020728	IPS-1312D	7/16, 1/2, 9/16, 5/8, 11/16, 3/4, 13/16, 7/8, 15/16, 1, 1-1/16, 1-1/8, 1-1/4"	\$120.50	\$86.95
020736	IPS-1312DM	10, 11, 12, 13, 14, 15, 16, 17, 18, 19, 21, 22, 24 mm	\$109.40	\$78.95

Impact Socket Sets

- Heat treated Chrome Molybdenum sockets for professional applications
- Torque-Drive® sockets apply torque to flats of fasteners to prevent corner rounding and increase torque
- Black phosphate finish resists corrosion and will not peel



PROD. NO.	MOD. NO.	Contents	List	Sale
020723	IPS-1312	7/16, 1/2, 9/16, 5/8, 11/16, 3/4, 13/16, 7/8, 15/16, 1, 1-1/16, 1-1/8, 1-1/4"	\$76.15	\$54.95
020731	IPS-1312M	10, 11, 12, 13, 14, 15, 16, 17, 18, 19, 21, 22, 24 mm	\$65.05	\$46.95

200 PC Mechanic's Tool Set

- Torque Drive sockets in 6 point, 12 point, regular and deep
- Includes 3 ratchets: 1/4", 3/8", and 1/2" drive



020304 IMTK-200 | List \$277.10

SALE

\$199.95

Ratchet Wrenches



- All components forged from superior quality Chrome Vanadium steel
- Push button quick release holds socket securely

PROD. NO.	MOD. NO.	Drive	List	Sale
025195	IRH-14	1/4"	\$22.45	\$15.95
025395	IRH-38	3/8"	\$30.00	\$21.95
025595	IRH-12	1/2"	\$37.50	\$26.95

3/8" DR 50 ft-lb Air Ratchet



SUPER SPECIAL

- 160 RPM
- 028304** IAR38 | List \$61.65

SALE

\$39.95

1/2" DR Air Impact Wrench



SUPER SPECIAL

- Single hammer
 - 230 ft-lb
- 028212** I|50S | List \$79.90

SALE

\$39.95



PROFESSIONAL PRODUCTS - VALUE BY DESIGN

Wrench Sets - Polished



- Drop forged heat treated Chrome Vanadium steel
- 020210: SAE
- 020211: Metric

PROD. NO.	MOD. NO.	Contents	List	Sale
020210	ICW-14PS	3/8, 7/16, 1/2, 9/16, 5/8, 11/16, 3/4, 13/16, 7/8, 15/16, 1, 1-1/16, 1-1/8, 1-1/4"	\$58.15	\$41.95
020211	ICW-14PM	10, 11, 13, 14, 15, 16, 17, 18, 19, 21, 22, 24, 27, 32 mm	\$58.15	\$41.95

Wrench Sets - Jumbo



- Industrial quality drop forged Chrome Vanadium steel
- 020202: SAE
- 020203: Metric

PROD. NO.	MOD. NO.	Contents	List	Sale
020202	ICWJ-10S	1-5/16, 1-3/8, 1-7/16, 1-1/2, 1-5/8, 1-11/16, 1-3/4, 1-13/16, 1-7/8, 2"	\$277.10	\$199.95
020203	ICWJ-10M	33, 35, 36, 38, 41, 43, 44, 46, 48, 50 mm	\$277.10	\$199.95

14 PC SAE Angle Wrench Set - 60° & 15°



- Fully polished mirror finish
- 3/8 - 1-1/4"
- 60° & 15°

020222 IACW-14 | List \$145.45

SALE \$104.95

Combination Wrench Sets



- Raised panel style
- 020215: SAE
- 020216: Metric

PROD. NO.	MOD. NO.	Contents	List	Sale
020215	ICW-16	1/4, 5/16, 3/8, 7/16, 1/2, 9/16, 5/8, 11/16, 3/4, 13/16, 7/8, 15/16, 1, 1-1/16, 1-1/8, 1-1/4"	\$83.10	\$59.95
020216	ICW-16M	6, 8, 9, 10, 11, 12, 13, 15, 17, 18, 19, 21, 22, 24, 30, 32 mm	\$83.10	\$59.95

22 PC SAE/Metric Combination Wrench Set



- Drop forged Chrome Vanadium steel

020217 ICW-22SM | List \$41.50

SALE \$29.95

3/8" DR Torque Wrench



- Click type
- 120 - 960 in-lb

021801 ITW-2060 | List \$81.70

SALE \$58.95

3 PC Aviation/Tin Snips Set



- Serrated blades

020802 IAS-3S | List \$34.60

SALE \$24.95

5 PC Locking Pliers Set



- Tough alloy steel construction
- Comfortable rubber handle grips
- All models complete with wire cutter

020608 ILPS-5C | List \$54.00

SALE \$38.95

5 PC Cushion Grip Pliers Set



- Cushion-grip handles

020604 IPL-5S | List \$49.95

SALE \$35.95

7 PC Square Extractor Set



- 1/8 - 9/16"

024207 ISE-7 | List \$80.30

SALE \$57.95

14 PC ABS Handle Screwdriver Set



- Chrome Vanadium steel shafts
- Comfortable ABS handles
- 3 x Phillips
- 3 x Square
- 5 x Slot
- 3 x TORX®

020911 ISD-14 | List \$41.50

SALE \$29.95

Bolt Cutters



- Hardened blades

PROD. NO.	MOD. NO.	Length	List	Sale
020504	IBC-18	18"	\$33.20	\$23.95
020505	IBC-24	24"	\$41.50	\$29.95
020506	IBC-36	36"	\$81.70	\$58.95



1" x 15' 1,500 lb Ratchet Tie Down Set

SUPER SPECIAL



- Heavy-duty weather resistant polyester web
- Rated capacity 1,500 lb

027116 ITD-1154R | List \$46.85

SALE

\$29.95

2" x 30' 10,000 lb Ratchet Tie Down



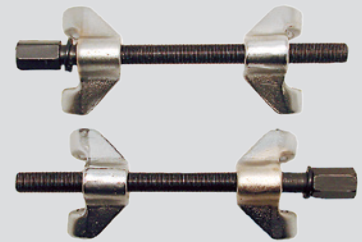
- Heavy-duty weather resistant polyester web
- Rated capacity 10,000 lb

027108 RTD-230 | List \$80.30

SALE

\$57.95

MacPherson Strut Coil Spring Compressor Set



027255 ISC-200 | List \$70.60

SALE

\$49.95

7" Variable Speed Polisher



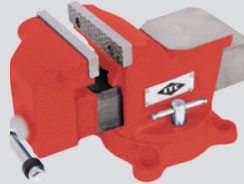
- 10 Amp 120V motor
- 1,000 – 3,000 RPM no load speed with thumbwheel selector

011713 IPT-700V | List \$184.80

SALE

\$126.95

Vises



- Lightweight vise cast from 30,000 PSI tensile strength iron
- 360° swivel base with dual lock down handles

PROD. NO.	MOD. NO.	Jaw Width	List	Sale
024724	ISVL-4	4"	\$123.25	\$88.95
024726	ISVL-6	6"	\$217.50	\$156.95
024728	ISVL-8	8"	\$299.30	\$199.95

Bench Grinders



- Spindles are all ball bearing
- Comes complete with adjustable eye shields and tool rests
- Capacitor start motor
- cUL approved

PROD. NO.	MOD. NO.	Motor	List	Sale
028013	IBG-6	1/2 HP	\$138.50	\$99.95
028014	IBG-8	3/4 HP	\$193.95	\$139.95

60 PC SAE/Metric Tap and Die Set



- SAE: #4-12, 1/4-1/2" NC & NF, 1/8"-27 NPT
- Metric: M3-M12

024312 ITD-60C | List \$180.10

SALE

\$129.95

10 PC Heat Gun Kit



- 120 volt, 12.5 amps
- Features dual heat settings and fan speeds
- Air temperature:
- Low: 375°C (700°F)
- High: 495°C (925°F)
- Includes many accessories

011981 SPT270 | List \$49.40

SALE

\$33.95

Non-Contact Infrared Thermometer

SUPER SPECIAL



- Allows accurate measurement of temperature without contact
- Measuring range: -20°C to 520°C / -4°F to 968°F

027591 IRT-520 | List \$142.70

SALE

\$99.95

5,500 lb Hydraulic Pallet Truck

- 27" x 48" fork dimensions
- Heavy duty pump for long life



024852 IPT-55A | List \$692.85

SALE

\$479.95

3 Ton Hydraulic Service Jack

SUPER SPECIAL



- Conforms to ANSI standards
- Lifting range: 5-1/2" to 19-1/2"

024827 ISJ-3 | List \$289.00

SALE

\$199.95

3/8" x 50' Retractable Air Hose Reel - Metal



- High grade hardened steel spring
- Max. pressure: 300 PSI

028272 I3850AS | List \$263.25

SALE

\$189.95

20 Ton Air/Hydraulic Bottle Jack - Super Heavy Duty



- Welded tank and frame – for stronger performance in rough service conditions
- Super thick 1-1/8" base – provides an incredibly stable and strong lifting platform, especially on poor surfaces
- Built tough for the rigours of the heavy duty trucking, agricultural and fleet business
- Operating pressure 110-120 PSI

030159 390SHD | List \$543.00

SALE \$373.00

20 Ton Low Profile Air/Hydraulic Bottle Jack - Super Heavy Duty



- Welded tank and frame – for stronger performance in rough service conditions
- Super thick 1-1/8" base – provides an incredibly stable and strong lifting platform, especially on poor surfaces
- Built tough for the rigours of the heavy duty trucking, agricultural and fleet business
- Operating pressure 110-120 PSI

030160 391SHD | List \$510.00

SALE \$350.33

30 Ton Air/Hydraulic Bottle Jack - Super Heavy Duty



- Welded tank and frame – for stronger performance in rough service conditions
- Super thick 1-1/8" base – provides an incredibly stable and strong lifting platform, especially on poor surfaces
- Built tough for the rigours of the heavy duty trucking, agricultural and fleet business
- Operating pressure 110-120 PSI

030162 395SHD | List \$725.00

SALE \$498.02

22 Ton Air/Hydraulic Truck Jack



- Designed for lifting trucks, buses, trailers, and other heavy duty equipment
- Two-piece 42.7" handle
- Operates at 90 - 145 PSI

030470 727 | List \$869.10

SALE \$597.00

20 Ton Air/Hydraulic Truck Jack - Heavy Duty



- Model 728C has set the standard in the Canadian truck tire industry for over 10 years
- Low height: 9-1/4", high height: 16-1/4"

030445 728C | List \$1,310.10

SALE \$899.95

Single Stage 22 Ton Air Hydraulic Truck Jack - Super Heavy Duty



- Super Heavy Duty, single stage 22 Ton jack built for a wide variety of demands from the heavy duty trucking, agricultural, fleet, construction and military sectors
- The piston head seal design is borrowed from industrial technology providing a superior low and high pressure seal, giving this jack a much better hold under severe load conditions

030450 722SHD | List \$1,688.60

SALE \$1,159.95

Floor/Garage Jacks

- 2xP Double Pump design for fast efficient lifting
- Superior grade "soft" components for better performance in increased jack life

PROD. NO.	MOD. NO.	Capacity	List	Sale
030404	962DL	2 T	\$436.65	\$299.95
030405	963DL	3 T	\$553.10	\$379.95
030408	964D	4 T	\$582.20	\$399.95
030417	953D	3 T	\$349.30	\$219.95



962DL



963DL



964D



953D



Transmission Jacks

- STRONGARM Hydraulic Telescopic Transmission Jacks provide service technicians one-man capabilities for installing transmissions, differentials or transfer case
- Telescopic two-stage hydraulics for greater lift range, precise load control and rapid lift
- Extendable height from 37" to 76-3/8"
- Convenient foot-operated pump allows mechanic to use both hands to position and align saddle with transmission (814BA and 816BA also includes air operated hand valve)



PROD. NO.	MOD. NO.	Capacity	List	Sale
030535	814B	0.5 T	\$1,299.00	\$892.35
030536	814BA	0.5 T	\$1,745.00	\$1,198.70
030537	816B	1 T	\$1,739.00	\$1,194.60
030538	816BA	1 T	\$1,890.00	\$1,298.30

Jack Safety Stands



- Heavy duty stands feature notched saddles to accept unitized body configuration
- Sold and shipped in pairs

PROD. NO.	MOD. NO.	Capacity	List	Sale
032241	853A	3 T	\$87.25	\$59.95
032243	856A	6 T	\$130.95	\$89.95

Truck Axle Air/Hydraulic Jacks - SHD



- Super Heavy Duty, built tough for the rigors of the heavy duty trucking, agricultural and fleet business

PROD. NO.	MOD. NO.	Capacity	List	Sale
030475	750SHD	50 Ton (1st Stage) / 25 Ton (2nd Stage)	\$3,399.15	\$2,335.00
030476	760SHD	60 Ton (1st Stage) / 40 Ton (2nd Stage) / 20 Ton (3rd Stage)	\$4,068.80	\$2,795.00
030477	780SHD	80 Ton (1st Stage) / 50 Ton (2nd Stage)	\$4,549.20	\$3,125.00
030478	740SHD	40 Ton (1st stage) / 20 ton (2nd stage)	\$2,910.00	\$2,099.75

Under-Hoist Component Stands



- All steel construction with all joints welded together for maximum strength
- Ideal for exhaust and suspension work
- Not designed to support entire vehicle, may be used to stabilize vehicles that are raised by lifts

PROD. NO.	MOD. NO.	Height Range	List	Sale
032202	874A	55 to 85.5"	\$304.80	\$219.95
032204	875A	54.5 to 80.5"	\$297.90	\$214.95
032206	876A	66.5 to 73"	\$297.90	\$214.95

